

GB 1886.189—2016

---

3-

3-

1

3

2

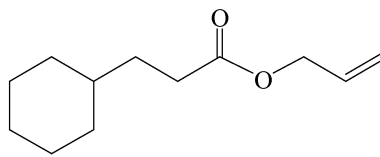
2.1

3-

2.2

$C_{12}H_{20}O_2$

2.3



2.4

196.29 ( 2007 )

3

3.1

1

1


		GB/T 14454.2

3.2

2

1

2

(25 )	1 mL	4 mL 80% ( )	GB/T 14455.3
3- , %		98.0	A
( KOH )/(mg/g)		5.0	GB/T 14455 

A

3-

A.1

A.1.1 : GB/T 11538—2006 5

A.1.2 :

A.1.3 :

A.2

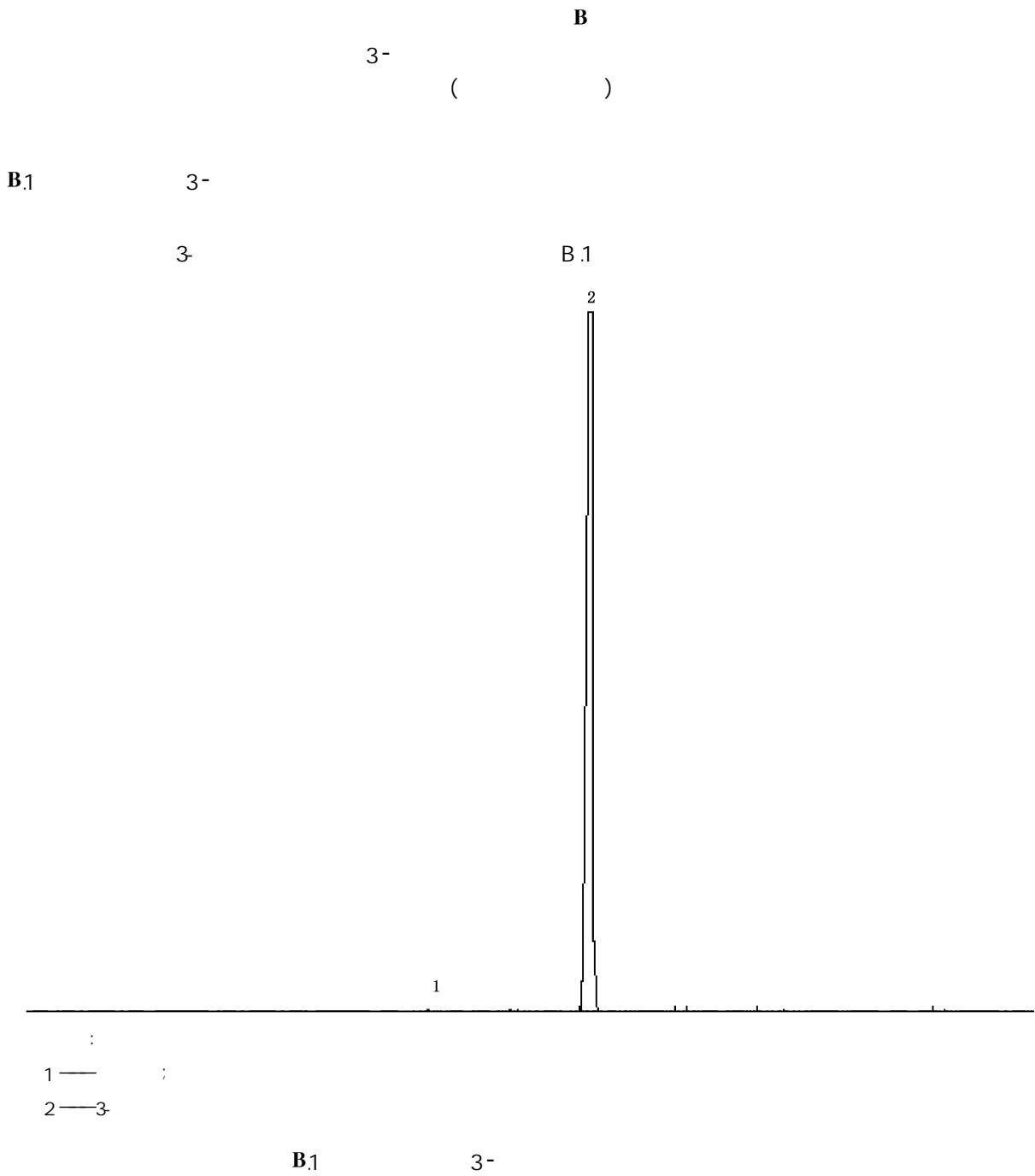
: GB/T 11538—2006 10.4

A.3

GB/T 11538—2006 11.4 ,

3-

B



**B2**

**B2.1** : , 30 m. 0.32 mm

**B2.2** : (5% )-

**B2.3** : 0.25 μm

**B2.4** : 200

**B2.5** : 200

- B2.6 :250
  - B2.7 :
  - B2.8 :
  - B2.9 :50 kPa
  - B2.10 :0.2 μL
  - B2.11 :75 1
-